

CELEBRITY CHEFS' BRUNCH

We are excited to share the artists joining us at the Celebrity Chef's Brunch on Sunday, April 27th, at the DuPont Country Club.

Thank you to our honorary Chair Tina Betz for bringing new sounds and on-site artists to the Celebrity Chefs' Brunch 2025.

Musicians will be featured throughout the DuPont Country Club to add to the Brunch ambience.

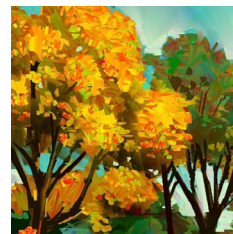


Jonathan Whitney
Project Trio

jwhitney.bandcamp.com.

Jonathan's music merges jazz idioms with classical forms; the written music acts as a skeleton, allowing the full character to be revealed in performance. His compositions are crafted around melody, pushed by harmony, prodded by counter melody, but led by texture. Find out more at

New in 2025: Visual Artists create an enduring image from the Celebrity Chefs' Brunch right in front of your eyes.



Artwork

Bruce Gulick is focused on painting in acrylics, oils, and digitally. Look for Bruce as he creates his impression of the Celebrity Chefs' Brunch in real time.

Described by the Philadelphia Inquirer as "on the cosmic cusp where Mozart might meet Mingus") Terry Klinefelter is a versatile artist, at home in jazz clubs as well as the classical concert stage. Find out more at terryklinefelter.com.



Terry Klinefelter

Cony's artwork encompasses a wide range of styles, from detailed portraits and intricate line art to nature-inspired themes and abstract compositions. Cony will be creating a new artwork on site. Find out more at conymadariaga.com/art



Cony Madariaga



Sharon Sable and
E. Shawn Quissaunee

Award winning musicians Sharon Sable and E. Shawn Quissaunee create a beautiful soundscape that is both bold and understated. The musical paths that have brought them together are rich and varied and weave elements of jazz, R&B, world, pop and much more into their memorable

and engaging performances. Find out more at sharonsablemusic.com/sharon-shawn

Celebrity Chefs' Brunch tickets on sale through April 21 at MealsOnWheelsDE.org

DISABILITY AWARENESS MONTH



MEET BOARD MEMBER LANETTE TAYLOR-SHERMAN



Lanette is a Senior Vice President and Community Relations Manager for Bank of America in Delaware and Greater Philadelphia. She's personally passionate about doing work locally and globally to support communities. She is always finding ways to give back to many non-profits, touching those in communities. Most recently Lanette joined a team and traveled to Hawaii for two weeks for a Habitat for Humanity Global Build. She shared that the experience was more rewarding than she could've ever imagined, and was reminded, volunteers are needed everywhere, and all can give back by supporting those in need, whether it's monetary, time, or skills.

As a Board Member, Lanette is passionate in supporting the Meals on Wheels Delaware mission, ensuring "seniors receive a healthy meal every day." Her passion to support local seniors shines when she goes out into the community and meets local seniors, delivers meals, and engages in small chats. Lanette shares, she began her Meals on Wheels delivery days in Richmond, VA as a college student with her then boyfriend's (now husband's) mom.

**THANK YOU TO THE DONORS FOR
ENABLING US TO DO MORE FOR VULNERABLE SENIORS**



GOAL: \$5,000

WE SURPASSED OUR GOAL WITH A TOTAL OF \$6,739 IN DONATIONS.

EVERY "MARCH" ACROSS THE COUNTRY EVENTS BRING ATTENTION TO THE NEED "FOR MEALS"



Every March we "March for Meals" and below are some pictures taken as Susan Dubb, our Development Director delivered with CHEER in Georgetown March 24th. This opportunity gives our staff a view of what our volunteers do on a Monday through Friday lunchtime period. It also gives us a chance to talk with the seniors and just see how much they continue to enjoy their hot lunch. In this time of uncertainty, we want to assure our seniors we are all on their side! We March for Meals because our seniors can't!



VISIT: MealsOnWheelsDE.org **CALL:** 302-656-3257 **SOCIAL:**  Meals On Wheels Delaware   MealsOnWheelsDE

Together we can end senior hunger.